

STATE OF FLORIDA  
COUNTY OF PALM BEACH  
  
THIS PLAT HAS BEEN FILED FOR  
RECORD AT \_\_\_\_\_ M.,  
THIS \_\_\_\_\_ DAY OF \_\_\_\_\_  
2014,  
AND DULY RECORDED IN PLAT  
BOOK NO. \_\_\_\_\_  
ON PAGES \_\_\_\_\_ THRU \_\_\_\_\_  
SHARON R. BOCK,  
CLERK & COMPTROLLER  
PALM BEACH COUNTY  
  
BY: \_\_\_\_\_ D.C.

**GENERAL NOTES:**

A. THE BEARINGS AS SHOWN HEREON ARE BASED ON STATE PLANE COORDINATES, REFERENCE THE NORTH AMERICAN DATUM OF 1983/1990 ADJUSTED (N.A.D. 83/90) AS CALIBRATED TO THE PUBLISHED PLAT COORDINATES, FLORIDA EAST ZONE, REFERENCE A BEARING OF S35°09'16"E ALONG THE WEST RIGHT OF WAY LINE OF JOG ROAD AS PER PLAT OF GABLES AT NORTHLAKE.

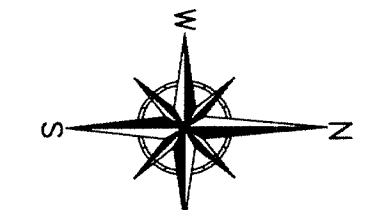
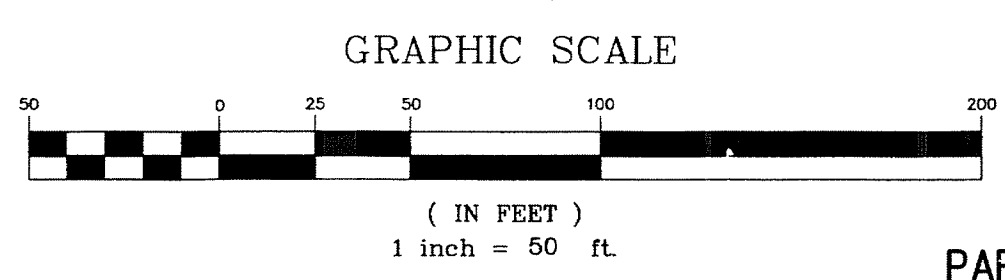
B. THE DISTANCES SHOWN ON THIS PLAT ARE GROUND DISTANCES. GROUND DISTANCES MULTIPLIED BY THE SCALE FACTOR OF 1.000031230 EQUALS GRID DISTANCE.

C. NOTICE: THIS PLAT, AS RECORDED IN ITS GRAPHIC FORM, IS THE OFFICIAL DEPICTION OF THE SUBDIVIDED LANDS DESCRIBED HEREIN AND WILL IN NO CIRCUMSTANCES BE SUPPLANTED IN AUTHORITY BY ANY OTHER GRAPHIC OR DIGITAL FORM OF THE PLAT. THERE MAY BE ADDITIONAL RESTRICTIONS THAT ARE NOT RECORDED ON THIS PLAT THAT MAY BE FOUND IN THE PUBLIC RECORDS OF THIS COUNTY.

D. NO BUILDINGS; OR ANY KIND OF CONSTRUCTION; OR TREES; OR SHRUBS SHALL BE PLACED ON ANY EASEMENT WITHOUT PRIOR WRITTEN APPROVAL OF ALL EASEMENT BENEFICIARIES AND ALL APPLICABLE CITY APPROVALS OR PERMITS AS REQUIRED FOR SUCH ENCROACHMENTS.

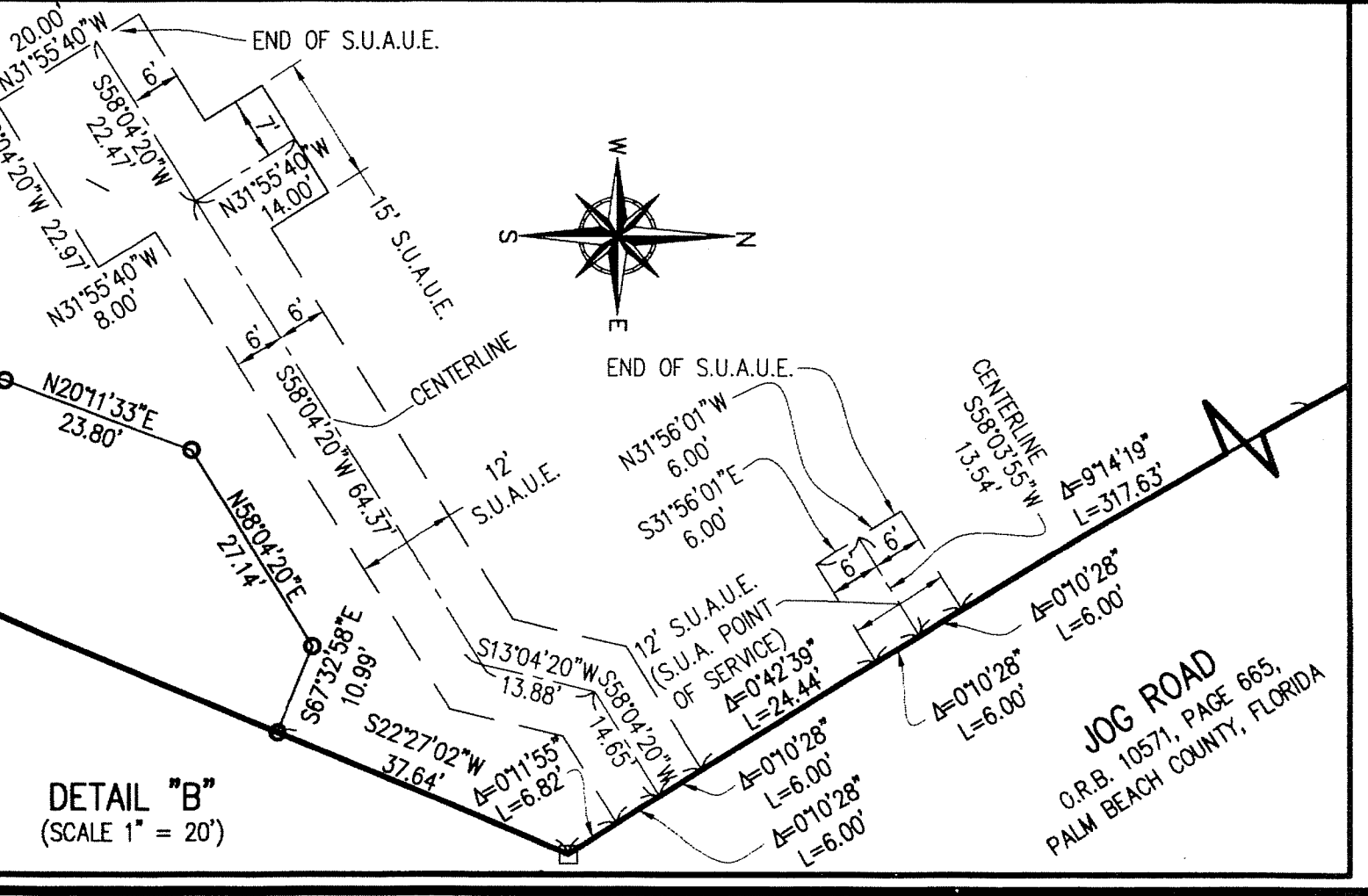
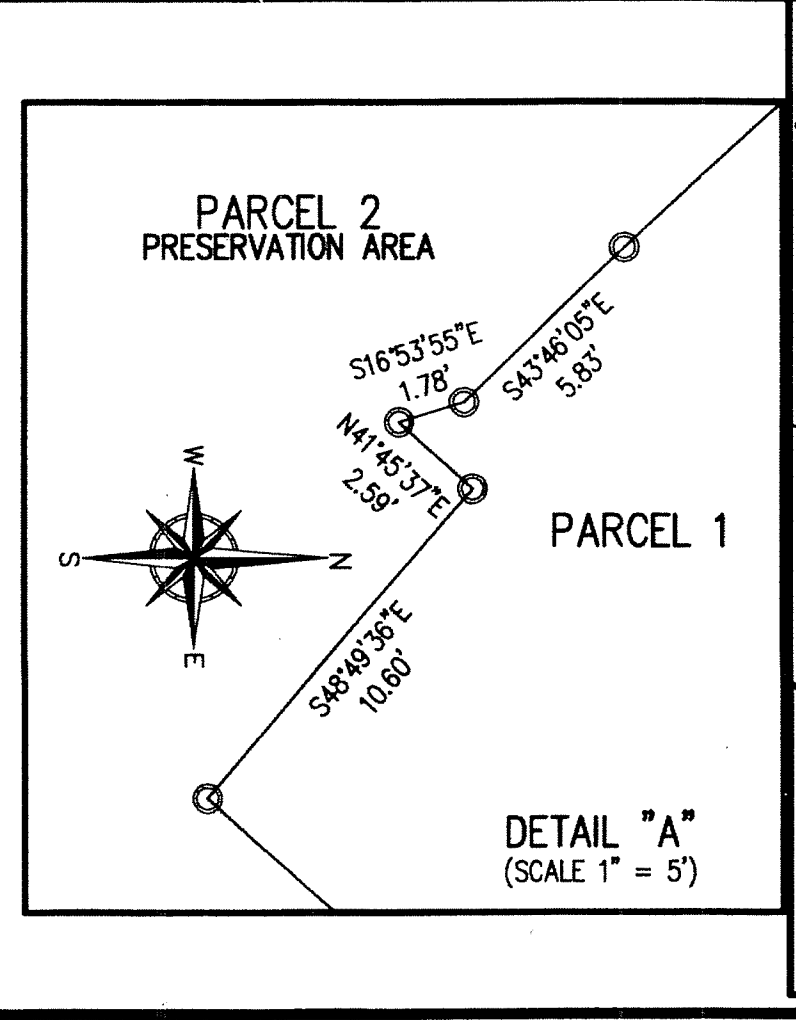
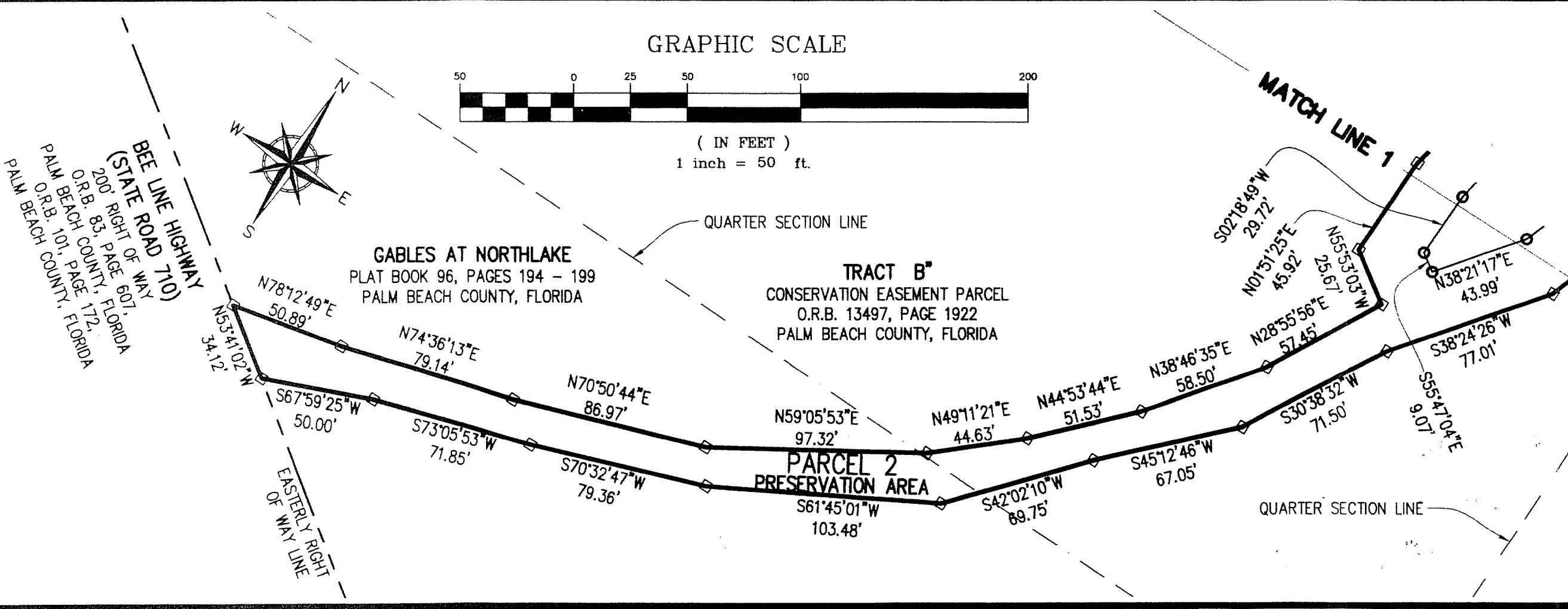
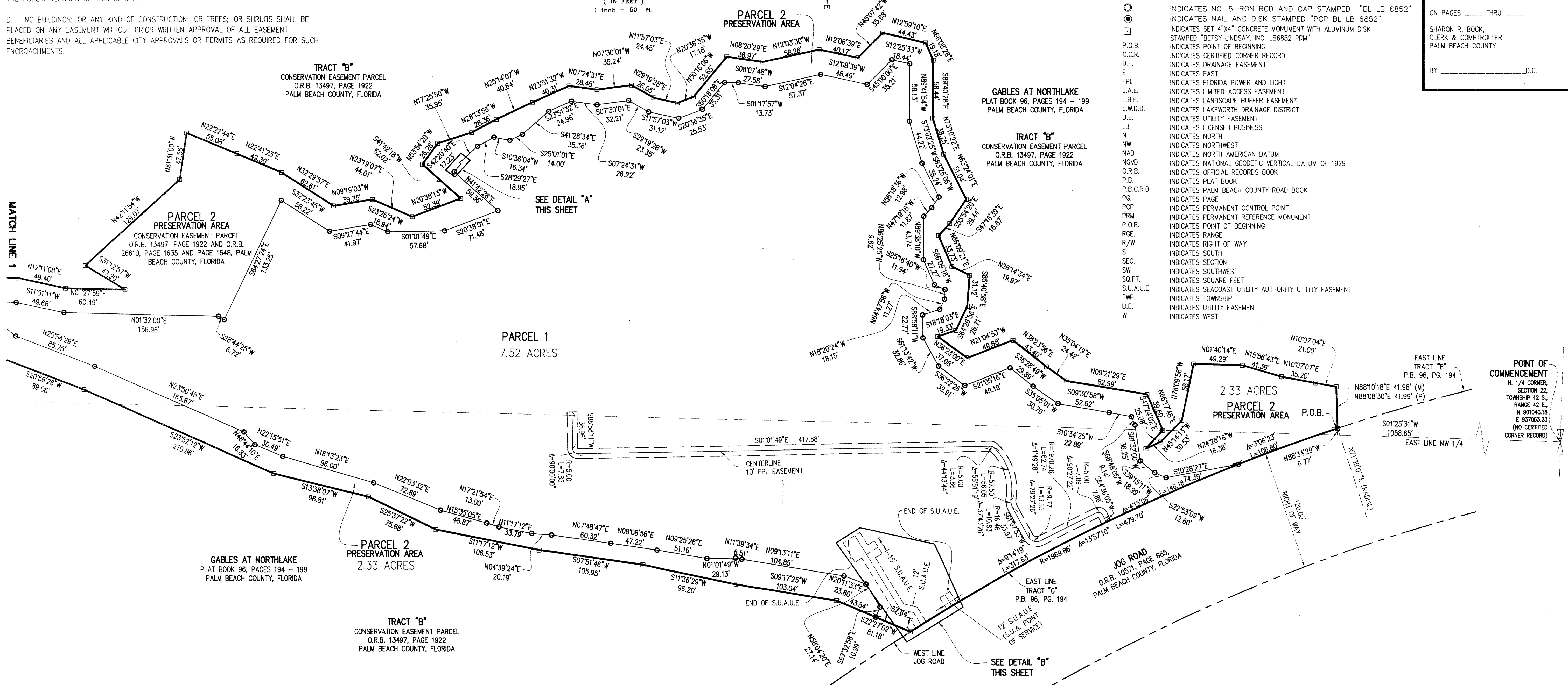
# DISCOVERY VILLAGE

BEING A REPLAT OF TRACT "G" AND A PORTION OF TRACT "B", OF THE PLAT OF GABLES AT NORTHLAKE AS RECORDED IN PLAT BOOK 96, PAGES 194 THROUGH 199, PALM BEACH COUNTY, FLORIDA PUBLIC RECORDS. BEING A PORTION OF SECTION 22, TOWNSHIP 42 SOUTH, RANGE 42 EAST, WITHIN THE CITY OF PALM BEACH GARDENS, PALM BEACH COUNTY, FLORIDA



**LEGEND**

- INDICATES NO. 5 IRON ROD AND CAP STAMPED "BL LB 6852"
- INDICATES NAIL AND DISK STAMPED "PCP BL LB 6852"
- INDICATES SET 4"x4" CONCRETE MONUMENT WITH ALUMINUM DISK STAMPED "BETSY LINDSAY, INC. LB6852 PRM"
- INDICATES POINT OF BEGINNING
- INDICATES DRAINAGE EASEMENT
- INDICATES EAST
- INDICATES FLORIDA POWER AND LIGHT
- INDICATES LIMITED ACCESS EASEMENT
- INDICATES LANDSCAPE BUFFER EASEMENT
- INDICATES LAKEWORTH DRAINAGE DISTRICT
- INDICATES UTILITY EASEMENT
- INDICATES LICENSED BUSINESS
- INDICATES NORTH
- INDICATES NORTHWEST
- INDICATES NORTH AMERICAN DATUM
- INDICATES NATIONAL GEODETIC VERTICAL DATUM OF 1929
- INDICATES OFFICIAL RECORDS BOOK
- INDICATES PLAT BOOK
- INDICATES PALM BEACH COUNTY ROAD BOOK
- INDICATES PAGE
- INDICATES PERMANENT CONTROL POINT
- INDICATES PERMANENT REFERENCE MONUMENT
- INDICATES POINT OF BEGINNING
- INDICATES RANGE
- INDICATES RIGHT OF WAY
- INDICATES SOUTH
- INDICATES SECTION
- INDICATES SOUTHWEST
- INDICATES SQUARE FEET
- INDICATES SEACOAST UTILITY AUTHORITY UTILITY EASEMENT
- INDICATES TOWNSHIP
- INDICATES UTILITY EASEMENT
- INDICATES WEST



**B BETSY LINDSAY, INC.**  
SURVEYING AND MAPPING  
7997 SW JACK JAMES DRIVE STUART, FL 34997  
(772)286-5753 (772)286-5933 FAX  
LICENSED BUSINESS NO. 6852  
NOVEMBER, 2014 SHEET 3 OF 3